



DVR Software Overview

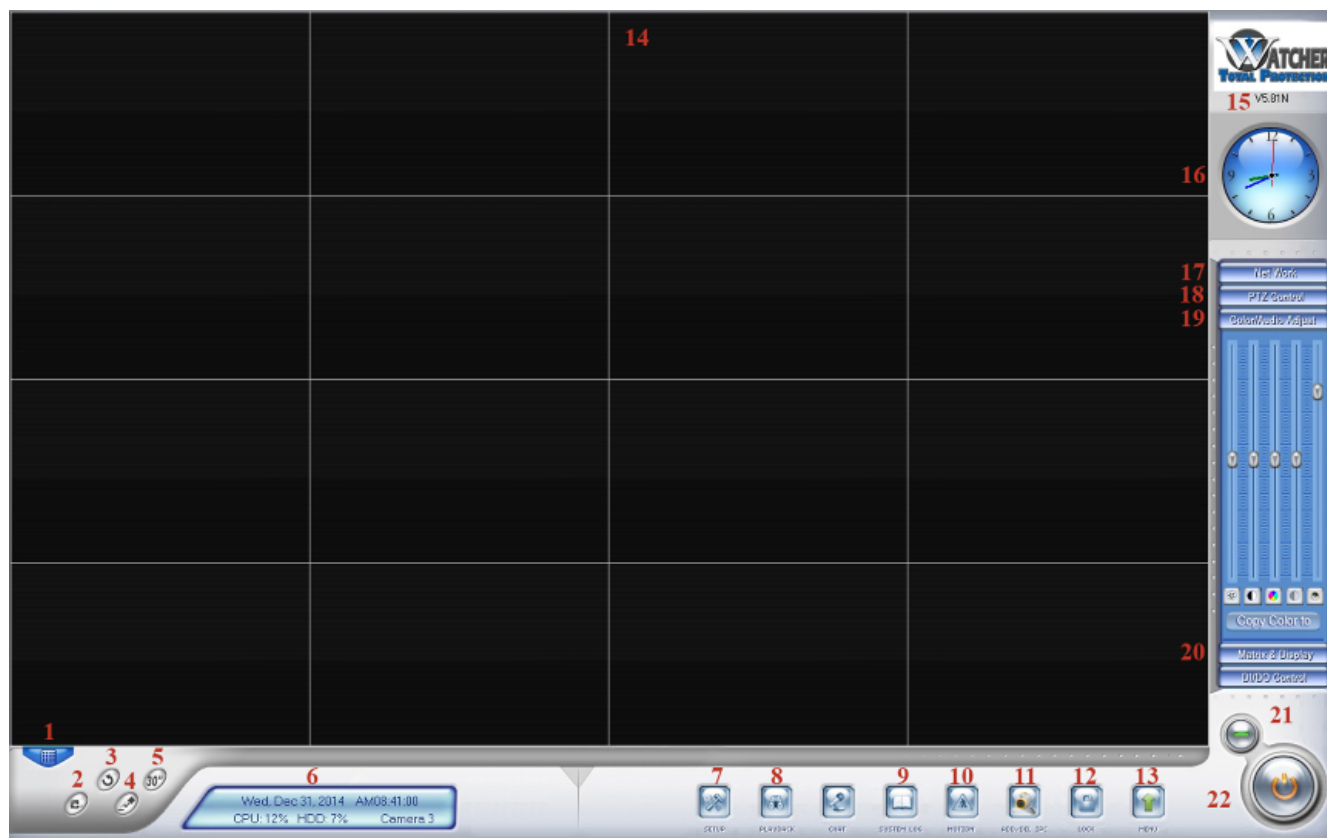
XL Series DVR Models

Software versions 5.67 – 5.81(N)



****Note**** If your DVR software version is lower than 5.67 (found in the upper right, just above the clock), give our Technical Support Team a call and they will gladly update your software to the latest version.

This guide is intended to give an overview of the main software interface of the DVR system. This guide only pertains to XL DVR models including our NVR systems (Microsoft Windows based). Please refer to our other guides for any of our embedded systems.



Main GUI Interface

****Note**** When referencing to the “currently selected camera” in the following descriptions, this is referring to the camera window with the red box around it.

1. **Window View** – Change the number of the camera windows in the main screen (14). Has a range from 1 to 64 views.
2. **Capture Image** – Captures an image of the currently selected camera. Images are saved in the folder specified in Setup → Grab Picture Save to. (Default is Desktop\Pictures)
3. **Camera Sequencing** – Cycles between cameras. The time between cycles is set in Setup → Camera Sequencing Interval. This also corresponds to the number of views (Window View) that you have set. For example, if the Window View is set to single view, it will cycle one camera. If it is set to 4 views, it will cycle to the next 4 cameras at a time.



4. **Manual Recording** – Will start full time recording of the currently selected camera. This will remain in effect until the Manual Recording button is pressed again.
5. **30 Second Emergency Record (All Cameras)** – This will record the next 30 seconds of time on all cameras connected to the DVR.
6. **System Information** – This displays information about the system such as CPU load and hard disk used capacity. Also has current date and time, current selected camera, and will display any errors that are occurring in red text.
7. **Setup DVR** – This will bring up the DVR setup window for overall software parameters. It also allows access to other setup options such as camera setup, display setup, and password setup. (**See [DVR Setup Guide](#))
8. **Video Playback** – Brings up the playback window to allow viewing and backing up of past video recordings. (**See [Playback Guide and/or Backup Guide](#))
9. **System Log** – Will display information about access, playback, and errors from the software. Used to find if any users have accessed playback or changed any settings.
10. **Motion Setup** – Used to setup motion settings for the selected camera. (**See [IP Camera Setup Guide](#))
11. **Add/Delete IP Camera** – Used to add IP cameras to the DVR software. (**See [IP Camera Setup Guide](#))
12. **Lock DVR** – This is used to lock the interface of the DVR. When it is on, the lock will be yellow (**See [Password Setup Guide](#))
13. **Other Features Menu** – This is used to access other features of the software such as POS search, on-screen keyboard, backup DVR parameters, etc. (**See [DVR Setup Guide](#)).
14. **Main Viewing Screen** – This is the main screen for viewing the cameras. Each camera will be in it's own window. The number of windows will depend on the setting chosen in the Window View (1).
15. **Software Version** – This is the version of DVR software that is currently loaded on the DVR. The most recent version is 5.81N (2/12/15). If you do not have the most current version, you can contact our Technical Support team for an update.
16. **Analog Clock** – This is set for the current time of the DVR and is shown using a traditional analog clock.
17. **Network Pane** – This pane will give information for the current network that you are connected to.
18. **PTZ Control Pane** – This pane is used to control the function of a Pan, Tilt, Zoom (PTZ) camera if you have one connected to the DVR.



19. **Color/Audio Adjust Pane** – This pane allows for the manipulation of the color settings and audio settings for each camera. It will adjust the setting for the currently selected camera.

20. **Matrix & Display** – This pane is used to change the display groups that are setup in Matrix Setup. (**See DVR Setup Guide)

21. **Minimize Button** – This is used to minimize the software to the Windows Taskbar. The software will remain open and recording.

22. **Exit Button** – This is used to shutdown the DVR software.

