



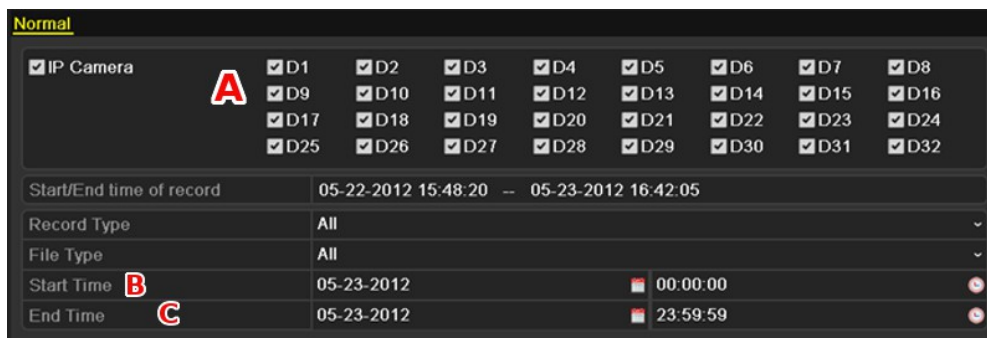
Backup Guide

XLE NVR MODELS

Backup

Recorded files can be backed up to various devices, such as USB flash drives, USB HDDs, or a DVD writer.

1. Enter Video Export interface.
 - a) Choose the **channel(s)** you want to back up.
 - b) Select the **Start Time / Date**.
 - c) Select the **End Time / Date**.
 - d) Click on **Quick Export**.




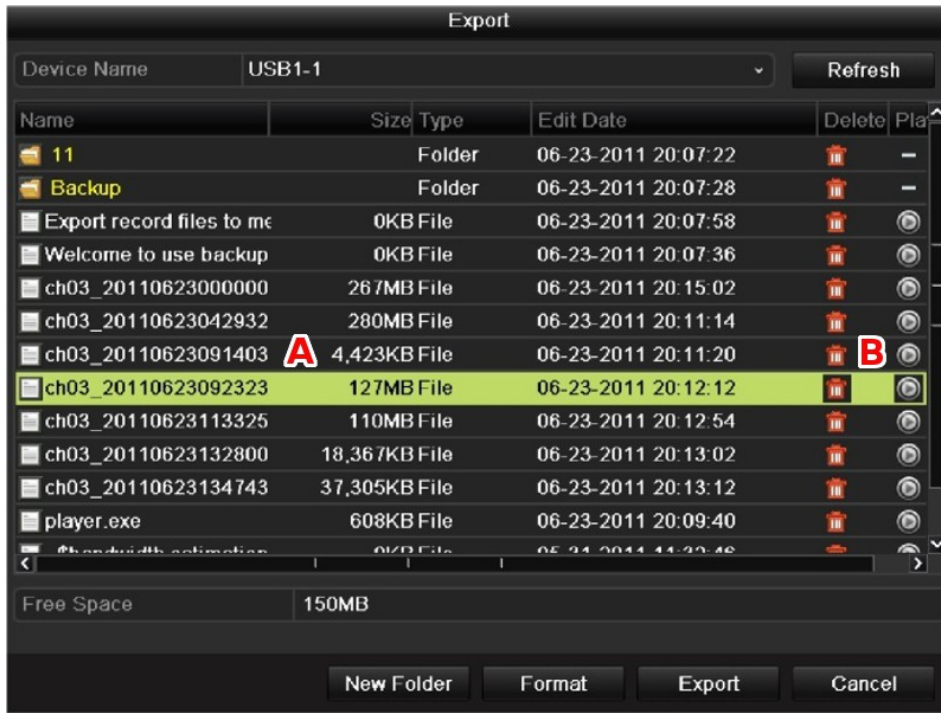
Quick Export Interface

2. Enter Export interface.
 - a) Choose backup **device name**.
 - b) Click on **Export**.



Quick Export using USB1-1

3. Check backup result.
 - a) Select the **record file** in Export interface
 - b) Click on  to check the result.



Checkup of Quick Export Result Using USB1-1