




POS Integration Setup

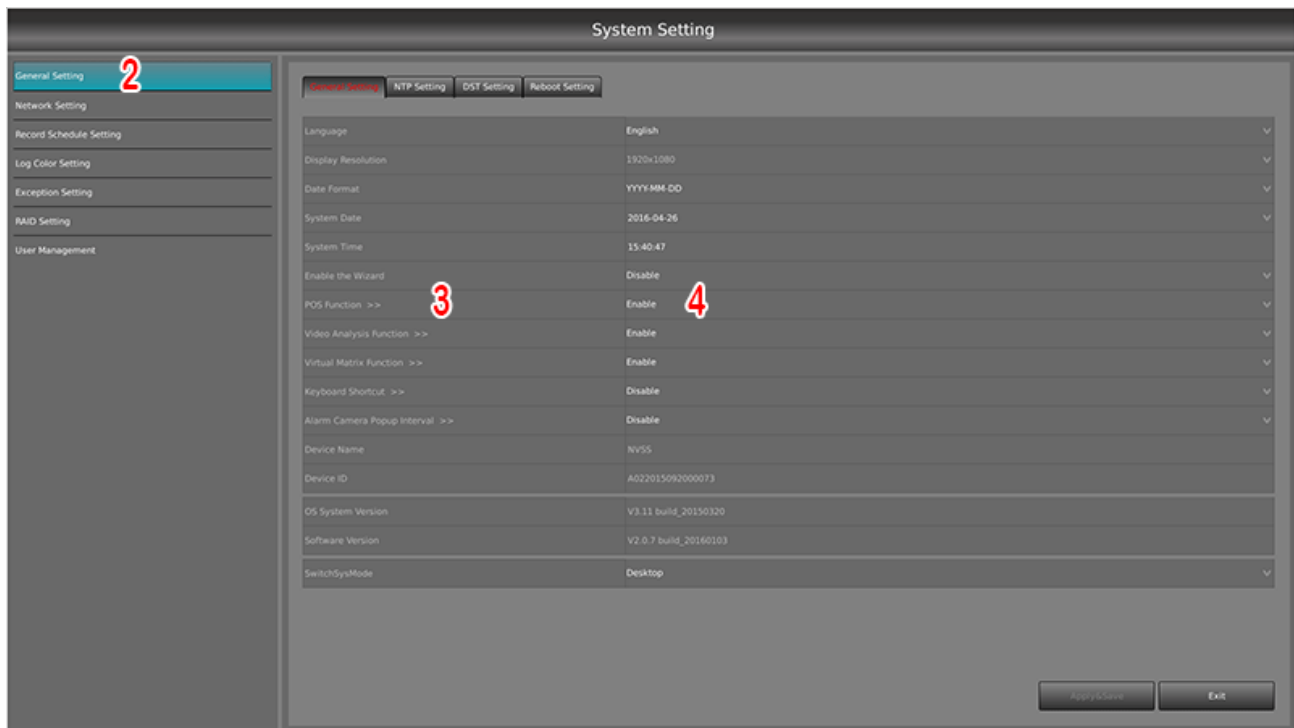
XL PLUS NVR MODELS



This guide will assist in setting up POS integration with the Watcher XL Plus NVR. This will allow transaction data to be viewed on the corresponding video surveillance taken at the same time.

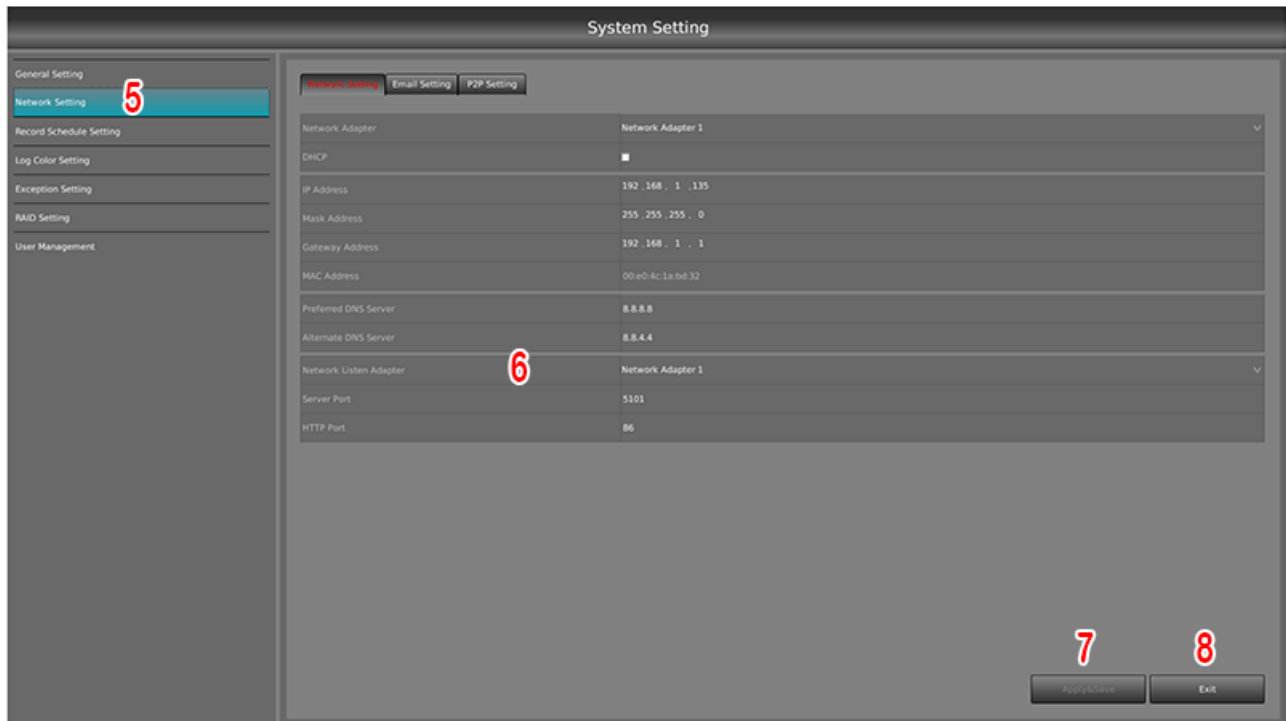
Enabling POS function in the software

1. Click on **Settings**  in the Live Preview screen.
2. Click on **General Setting**.
3. Find **POS Function** in the middle of the screen.
4. Click the **Disabled** setting and change to **Enabled**.

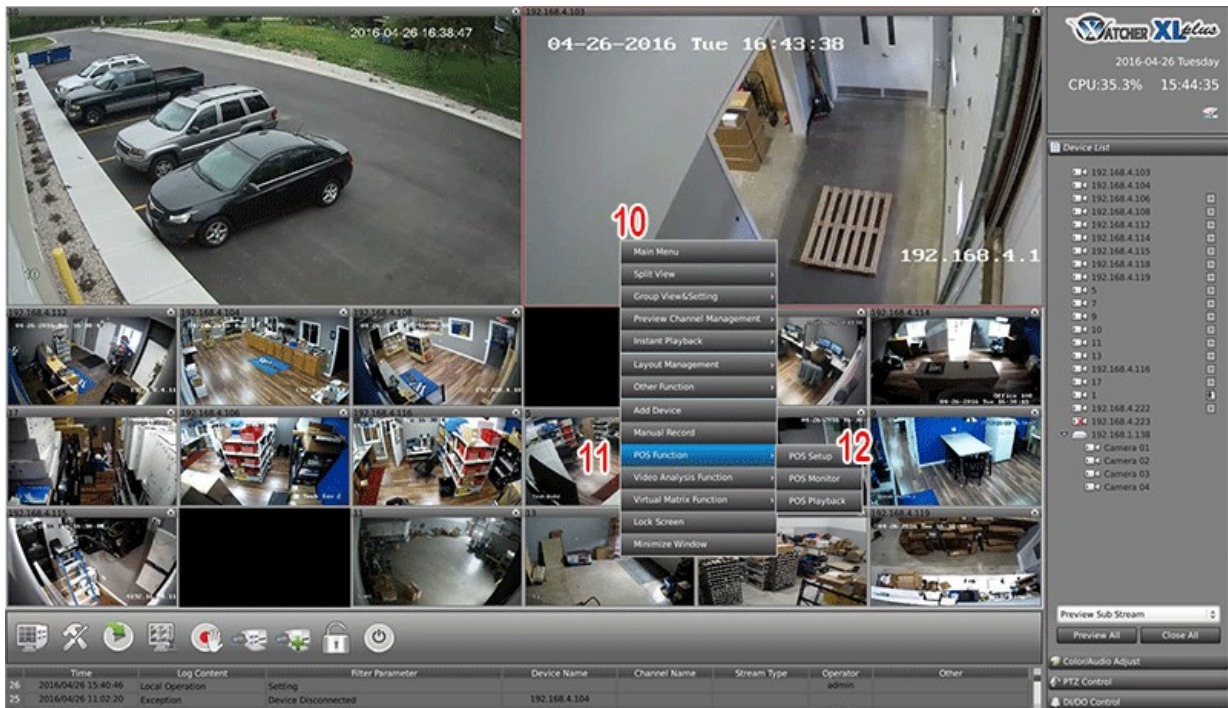


5. Click on **Network Setting**.
6. The **Network Listen Adapter** needs set to Network Adapter 1 (store network). *Please take note of the IP address on Network Adapter 1 as this will be needed for the setup at each register.*
7. Click on **Apply&Save**.
8. Click on **Exit**.
9. Restart the system.

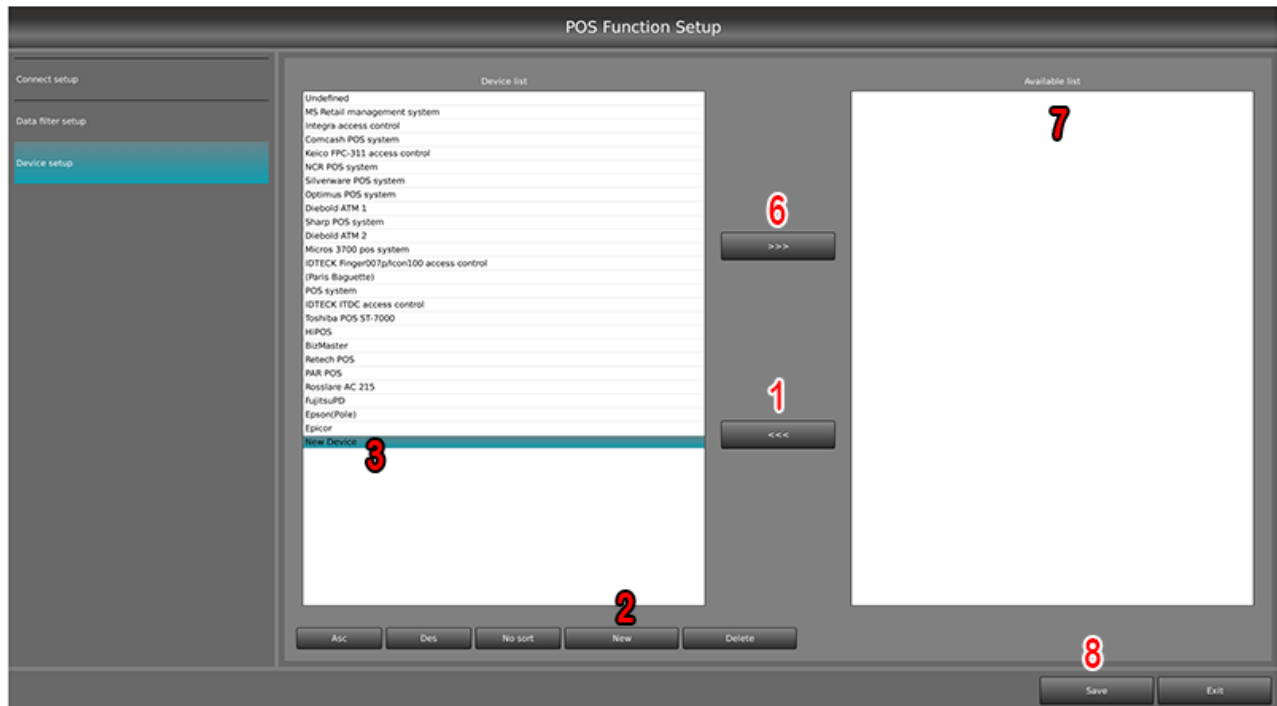




- 10. After Restart, right click on the Live Preview screen.
- 11. Click on **POS Function**.
- 12. Click on **POS Setup**.



The screen below will pop up.



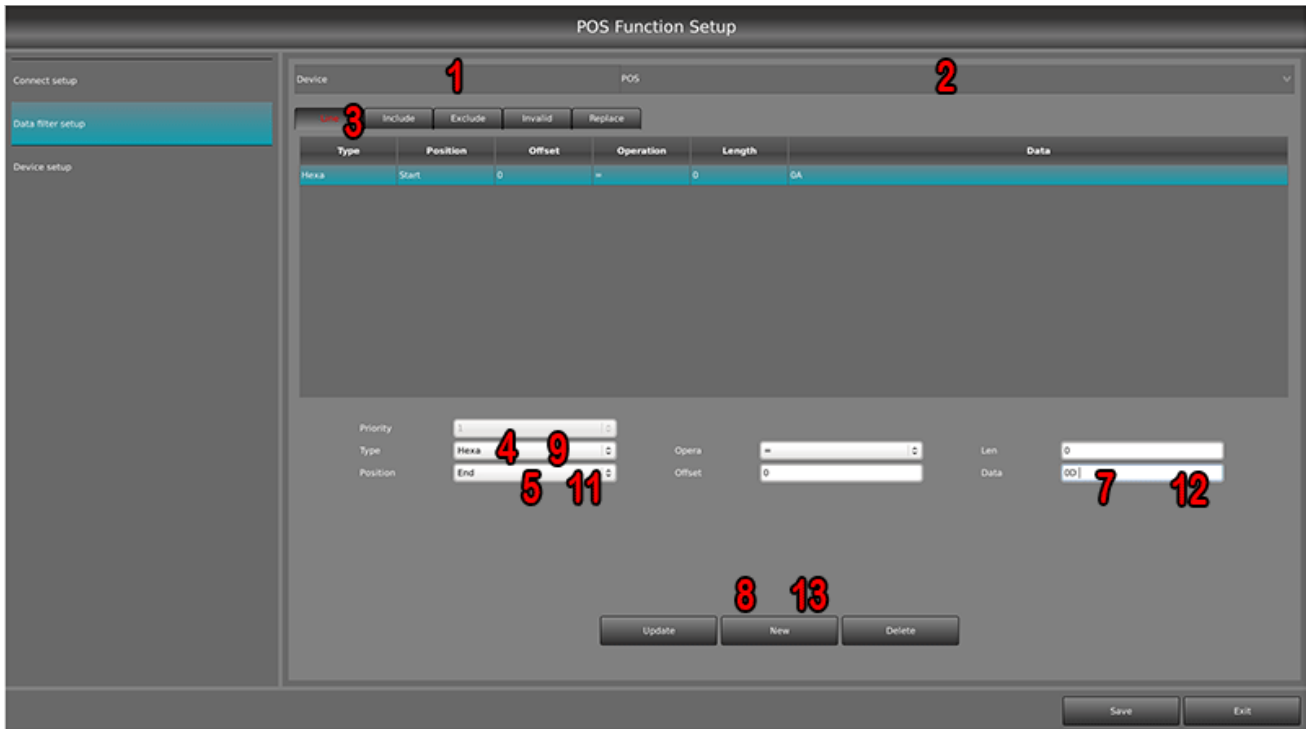
Make sure **Device Setup** on the left-hand side is selected.

1. Remove all of the devices on the **Available List** by clicking the first one on the list and clicking **Remove Item**.
2. Click on **New**.
3. **New Device** will display on the Device List.
4. Double click the **New Device** entry at the bottom of the Device List.
5. Rename it to the POS vendor and click on **OK**.
6. Click **Add Item Button**.
7. The POS vendor is now on the **Available List**.
8. Click on **Save** at the bottom.



Setting up special command characters

Make sure **Data Filter Setup** on the left-hand side is selected. The screen below will pop up.



1. Click on the **Device** drop-down menu.
2. Click on the **POS** device.
3. Click on the **Line Tab**.
4. Click on the **Type** drop-down menu. Select **Hexa**.
5. Click on the **Position** drop-down menu. Select **Start**.
6. Click on the **Data** text box.
7. Type **0A** in the **Data** field.
8. Click on **New**. The entry will be added in the field above.
9. Click on the **Type** drop-down menu and select **Hexa** (if it has changed).
10. Click on the **Position** drop-down menu. Select **End**.
11. Click on the **Data** text box.
12. Type **0D** in the **Data** field.
13. Click on **New**. The entry will be added in the field above.



Setting up the cameras to show the POS data for each POS station camera.



1. Click on **Connect Setup** on the left-hand side. The setup screen above will appear.
2. Click on **Lan Setup**.
3. Click on the **Lan** drop-down menu. Select **LAN1** (may be already selected by default).
4. Click on the **Device** drop-down. Select the **POS vendor** (should be the only one on the list).
5. Click on **Name**. Type the name for this POS station. Examples: POS1, Reg 1, etc.
6. Click on the **Protocol** drop-down. Select **TCP** for Epicor and **UDP** for all other POS vendors. *This is a very important step for the POS integration to work. Make sure that the correct protocol selected.*
7. Click on **Port**. Input the port for the first POS station. It is recommend to start the first station with 3501. For each station beyond the first, this port number should increase by 1. For example, POS1 is 3501, POS2 is 3502, POS3 is 3503. **Please take note of these ports as they will be needed when setting up each register.**
8. Click on the **Buffering Time** drop-down menu. Select **3 Sec**.
9. Click on **Select Cameras**. Select the camera that corresponds to the first POS station.
10. Click on **OK**.
11. Click on **Save**.
12. Click on **Exit**.



Repeat this process for each POS station that you want to be integrated with your XL Plus NVR. Below is an example of how the second station would be setup.

Lan → LAN2
Device → POS vendor
Name → POS2
Protocol → TCP (if Epicor)
Port → 3502
Buffering Time → 3.0 sec
Associate cameras → The camera that points at POS2

Configuration Settings for POS Stations

The configuration settings must be entered into each POS station. Below are the instructions for Activant/Epicor and Rocksolid. For all other POS vendors, please contact the vendor's technical support for integrating POS with surveillance systems.

In each Activant/Epicor terminal, perform the following:

1. Open **Eagle Browser**.
2. Click on **Utilities**.
3. Click on **Device Configuration**.
4. Click on **Misc Kpad** (at the top).
5. Click on **Configure Receipt Printer TCP/IP Monitor** (hit the R key on the keyboard).
6. Click on IP Address = Store Network IP Address for DVR.
7. Click on Port. Enter the register's port number from NDVR software setup.
8. Click on **Enabled**.
9. Close the POS software and re-open.
10. Test functionality by completing a transaction on that register.
11. Repeat for all registers being connected.

For each RockSolid terminal perform the following:

1. Open **Roman Utilities**.
2. Click on **Preferences**.
3. Click on **Security**.
4. Click on **General**.
5. Click on the **Security Camera Company** drop down box.
6. Click on **Silent**.
7. Go back to **Utilities**.
8. Click on **Preferences**.
9. Click on **Other**.
10. Click on **Misc**.
11. Click on **Video Capture ID** and **Video Capture Password**.
12. Enter **1**.



13. Close **Roman**.
14. Open **POS**.
15. Click on **View**.
16. Click on **Options**.
17. Click on **Search Video**.
18. Click on **Use Video Capture Text**.
19. Click on **Capture Server**.
20. Enter the **IP Address** of the DVR.
21. Click on **Capture Camera Name**.
22. Enter **1**.
23. Click on **Remote Port**. This is the port of the corresponding camera we set up in the DVR.

